

TITAN COMMERCIAL REALTY GROUP LLC



PROUDLY PRESENTS:
3140 TROY-SCHENECTADY RD
NISKAYUNA, NEW YORK 12309
SCHENECTADY COUNTY

CLASS A OFFICE SPACE WITH HIGH CEILINGS, BIG WINDOWS
AND ATTENTIVE ON-SITE LANDLORD ON BORDER OF LATHAM AND
NISKAYUNA.



QUICK FACTS

- CLASS A PROFESSIONAL OFFICE BUILDING
- EXCELLENT LOCATION WITH ATTENTIVE, ON-SITE LANDLORD
- BEAUTIFUL FINISHES AND WINDOWS EVERYWHERE
- AVAILABLE SPACES FROM 2,133 RENTABLE SQUARE FEET UP TO 5,469 RENTABLE SQUARE FEET
- ENVIRONMENTALLY AND TECHNOLOGICALLY ADVANCED, STATE OF THE ART OFFICE BUILDING
- LOCATED ON TROY-SCHENECTADY ROAD AT LATHAM/NISKAYUNA BORDER
- ASKING: \$16.50 PSF GROSS PLUS UTILITIES + INCREASE IN BASE YEAR



VIDEO TOUR



3,000 SF aprox

3140 Troy-Schenectady Rd, Niskayuna, NY - Office Space

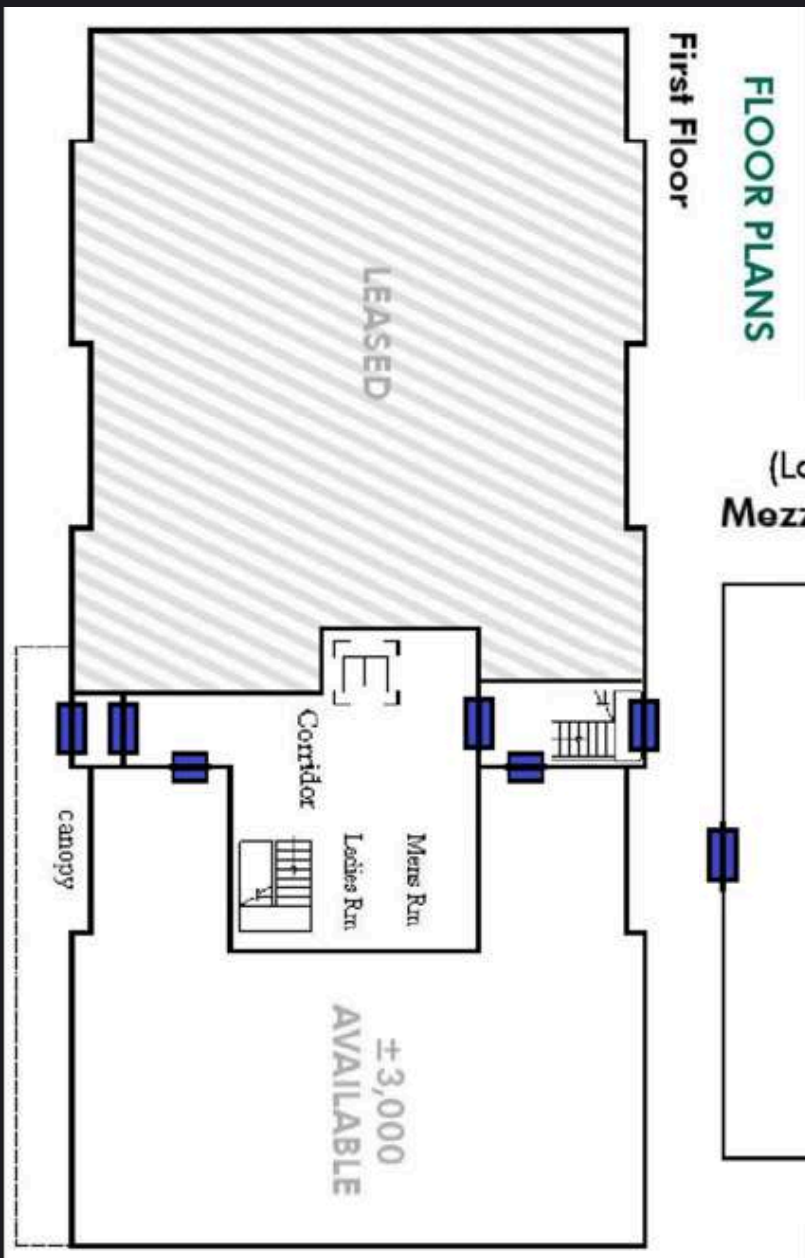




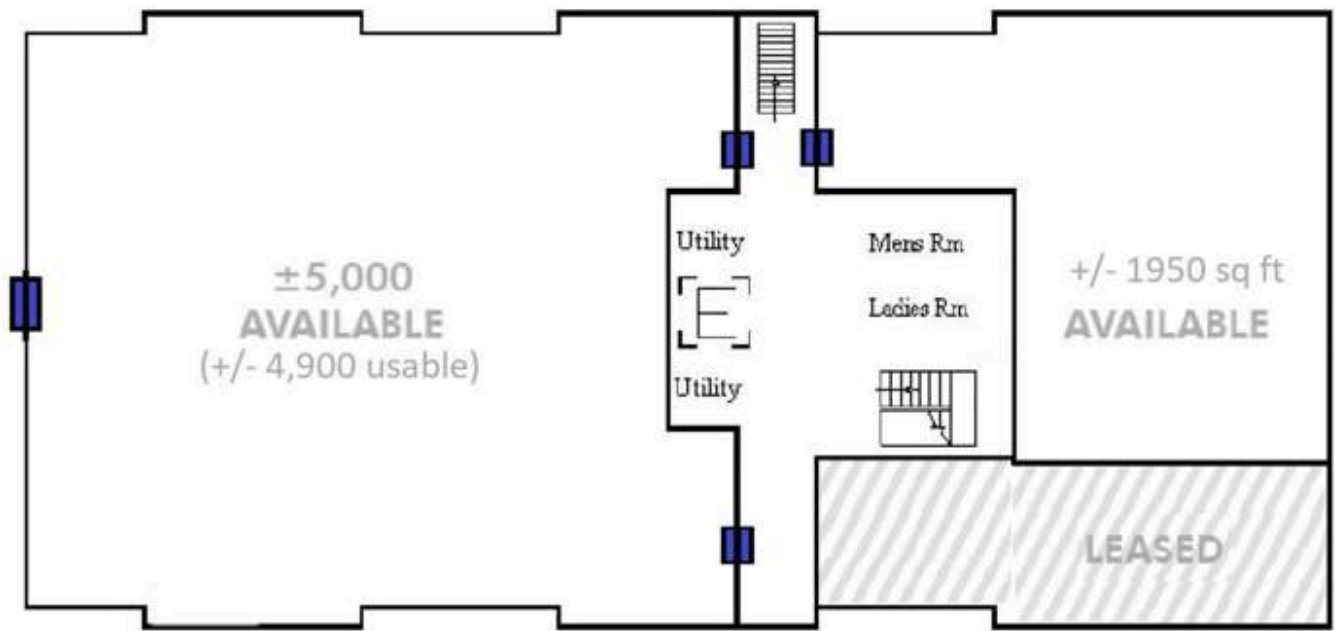


518 400 0668 EXT 702

TDROWLETTE@TITANCOMMERCIALREALTYGROUP.COM



**(Lower Level)
Mezzanine Level**



TITAN COMMERCIAL REALTY GROUP LLC
24 AVIATION RD, ALBANY, NY, 12205
518 400 0668

WWW.TITANCOMMERCIALREALTYGROUP.COM

https://www.dos.ny.gov/licensing/docs/FairHousingNotice_new.pdf

HELPING BUILD EMPIRES
ONE DEAL AT A TIME

TODD J DROWLETTE
TDROWLETTE@TITANCOMMERCIALREALTYGROUP.COM
NYS LICENSED REAL ESTATE BROKER
MANAGING DIRECTOR
518 400 0668 EXT 702

CONTACT INFORMATION

Exclusively Listed By



TITAN COMMERCIAL REALTY GROUP LLC

TDROWLETTE@TITANCOMMERCIALREALTYGROUP.COM

NYS LICENSED REAL ESTATE BROKER

MANAGING DIRECTOR

518 400 0668 EXT 702

24 Aviation Road, Suite 202

Albany, New York 12205

www.TitanCommercialRealtyGroup.com

https://www.dos.ny.gov/licensing/docs/FairHousingNotice_new.pdf



TODD J DROWLETTE

HELPING BUILD EMPIRES
ONE DEAL AT A TIME